

WELCOME

NEW PRAGUE SMALL AREA PLAN OPEN HOUSE



PROJECT INTRODUCTION

The City of New Prague is planning to redevelop the former Creamery site (highlighted in yellow on the left) to support a variety of uses including new residential opportunities, park space & public art, stormwater improvements, public parking, and the Praha Outdoor Performance Stage (POPS).

PROJECT TIMELINE

Part 1: Visioning

- Review relevant studies, plans, and conditions
- Steering committee meeting #1: establish project goals/vision

Public open house

Part 4: Finalize Small Area Plan

- Prepare master plan document and site grading plan
- Present to steering committee, Planning Commission, and City Council

Part 2: Design Scenario Development

- Prepare design options and alternatives
- Steering committee meeting #2: determine development program and narrow down design options

Part 3: Refine Design

- Refine preferred development plan
- Prepare estimated likely costs
- Submit to city for preliminary review



QUESTIONS?

Ken Ondich

Planning / Community Development Director,
City of New Prague

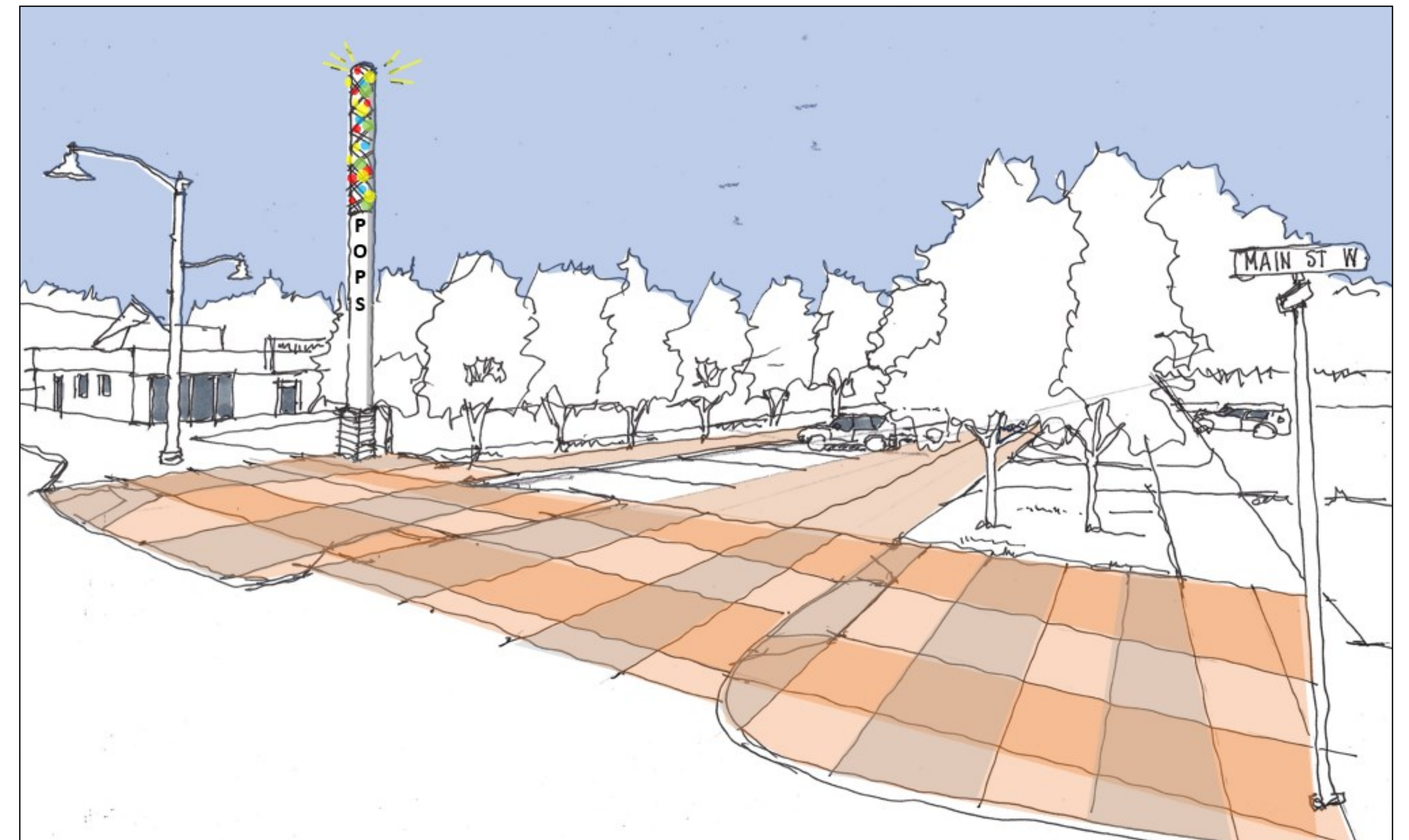
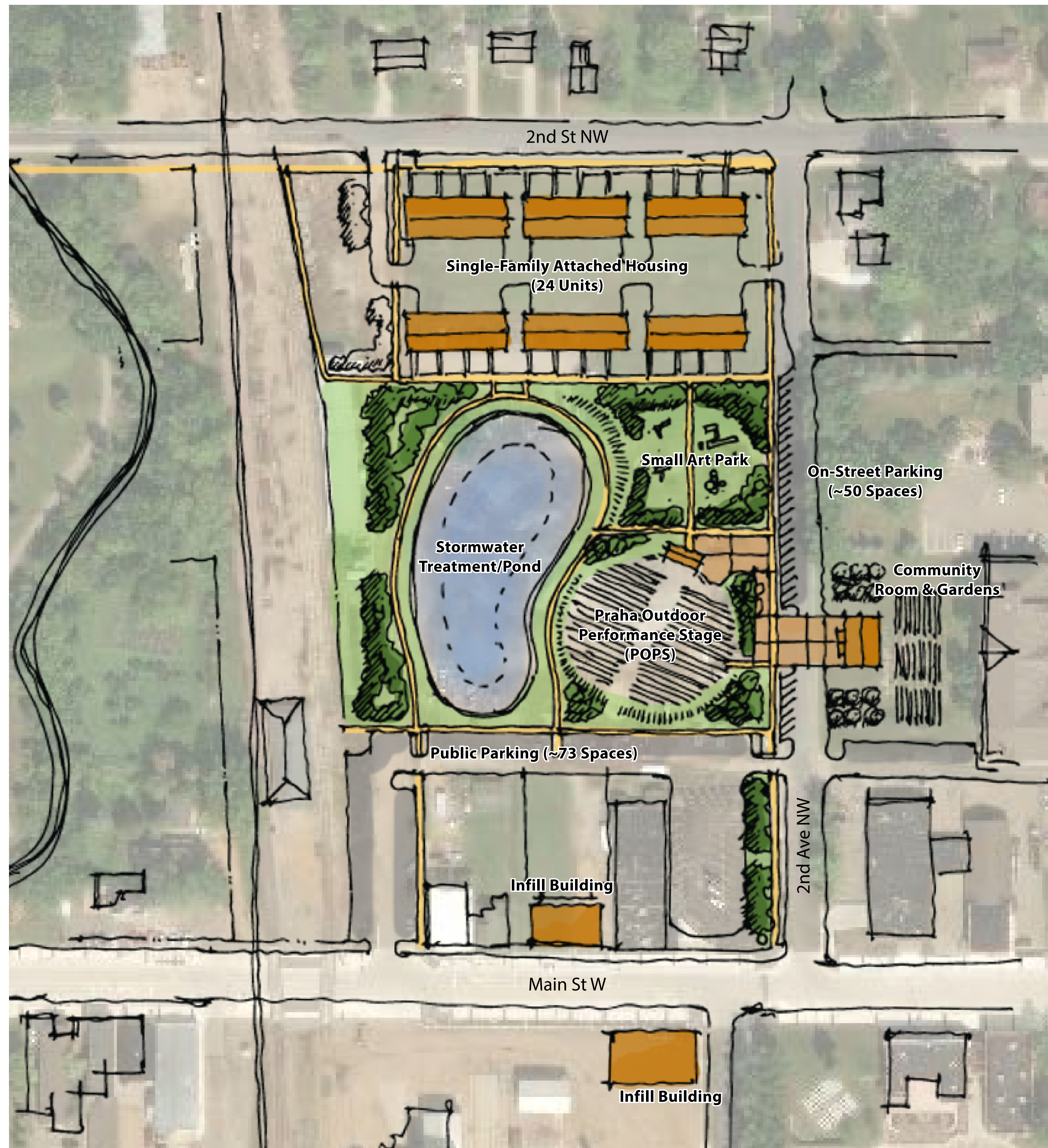


kondich@ci.new-prague.mn.us



952-758-4401

"CIVIC COMMONS"

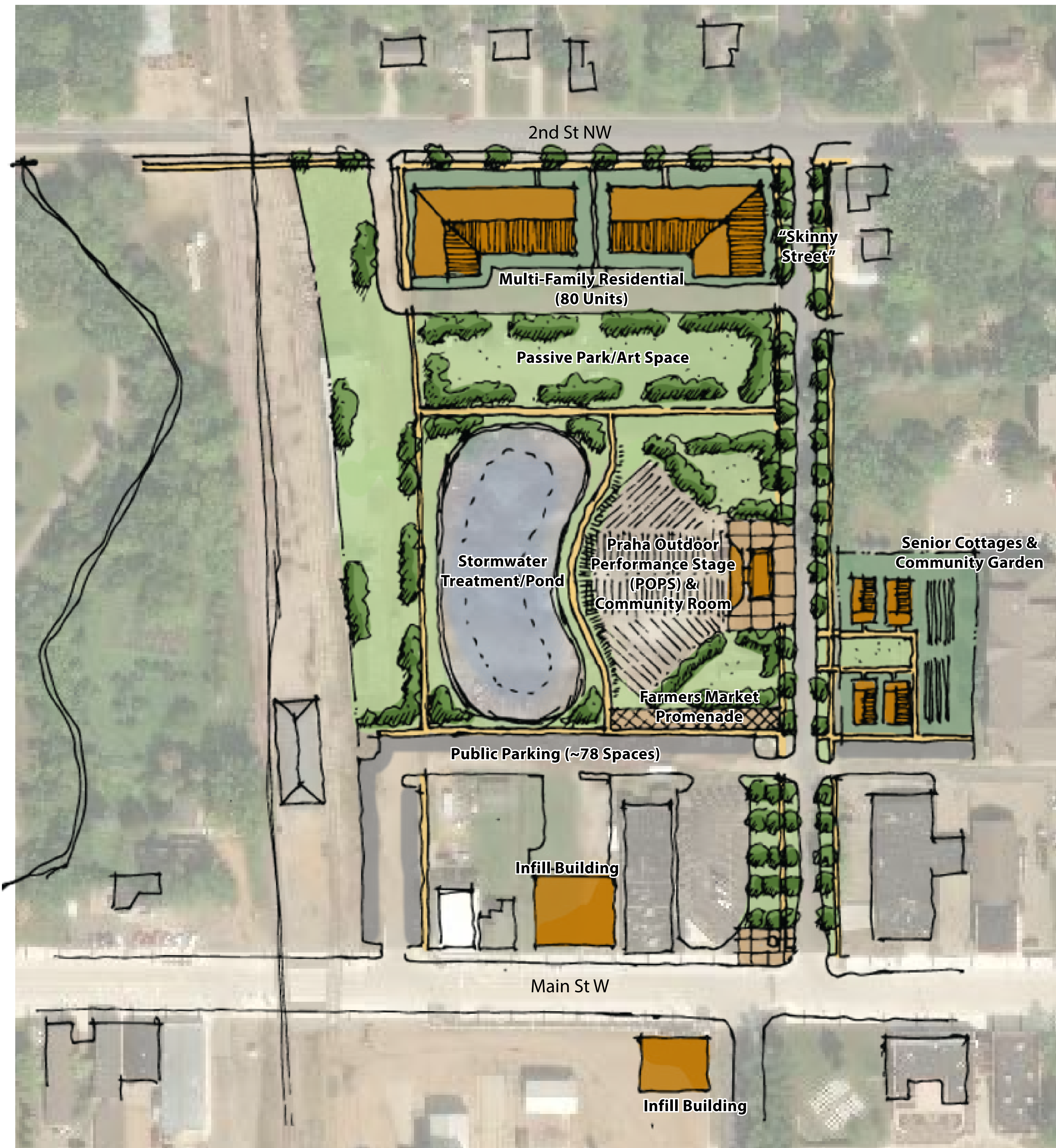


Gateway to Site (Main St W & 2nd Ave NW)



Praha Outdoor Performance Stage (POPS)

"IN-TOWN LIVING"



Community Room Front Porch with Praha Outdoor Performance Stage (POPS) Behind



Senior Cottages

COMMENTS

What is your favorite design concept?

What are your favorite elements of either design?

What other suggestions do you have for the site?

HELP US NAME THIS NEW DESTINATION!

Choose from the example words below or create your own

Square

Creamery

Village

Mill

Praha

Town

Plaza

Phillips

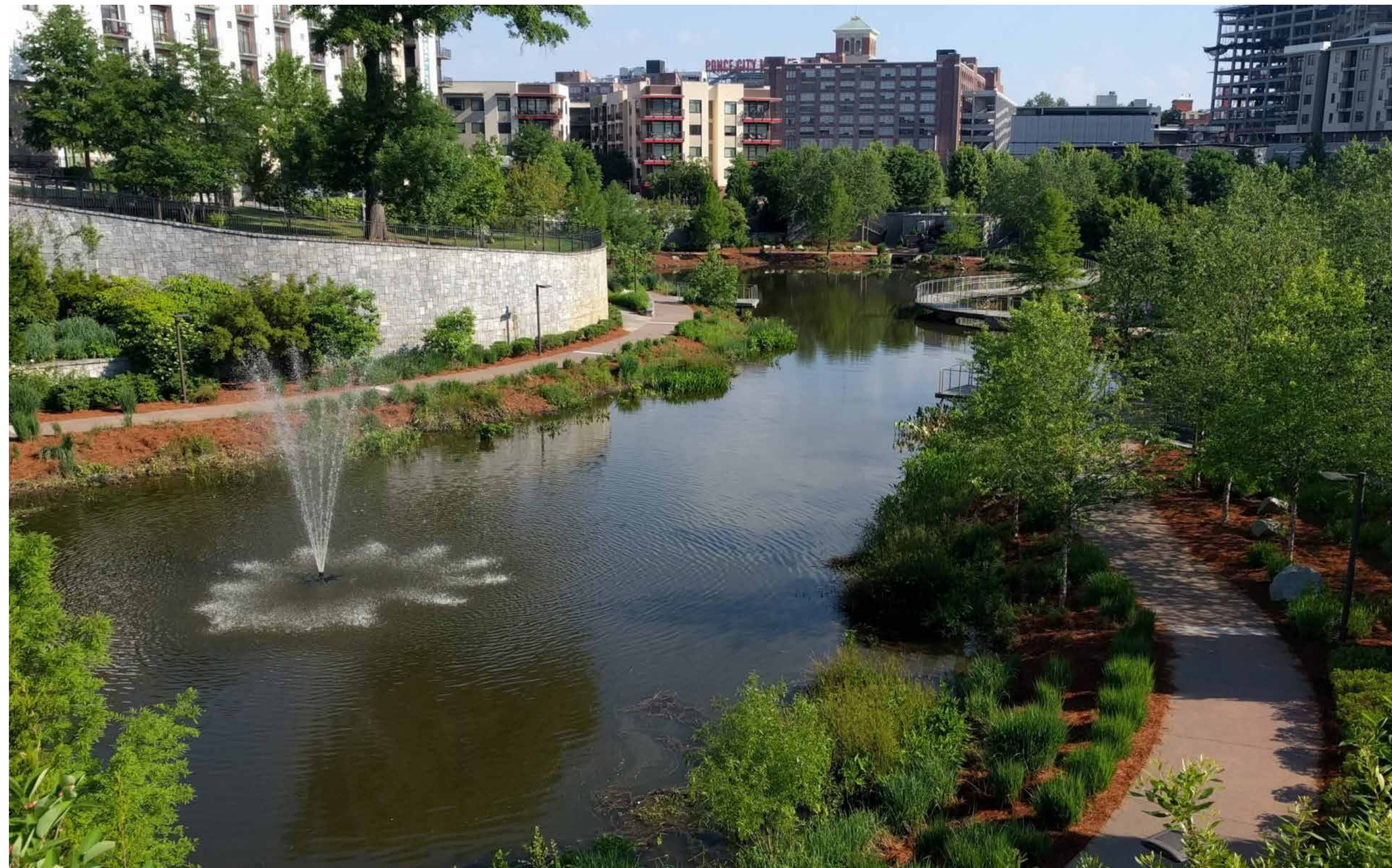
Commons

Railroad

Park

Depot

EXAMPLES OF STORMWATER PARKS



Clear Creek Basin



MD Anderson Cancer Center



Towerside District Stormwater Management System



W Washington St Park

POSSIBLE HOUSING TYPES

- Up to 80 multi-family units
- Up to 24 townhouse units
- Up to 4 senior cottages



Senior Cottages



Townhouses



Apartments