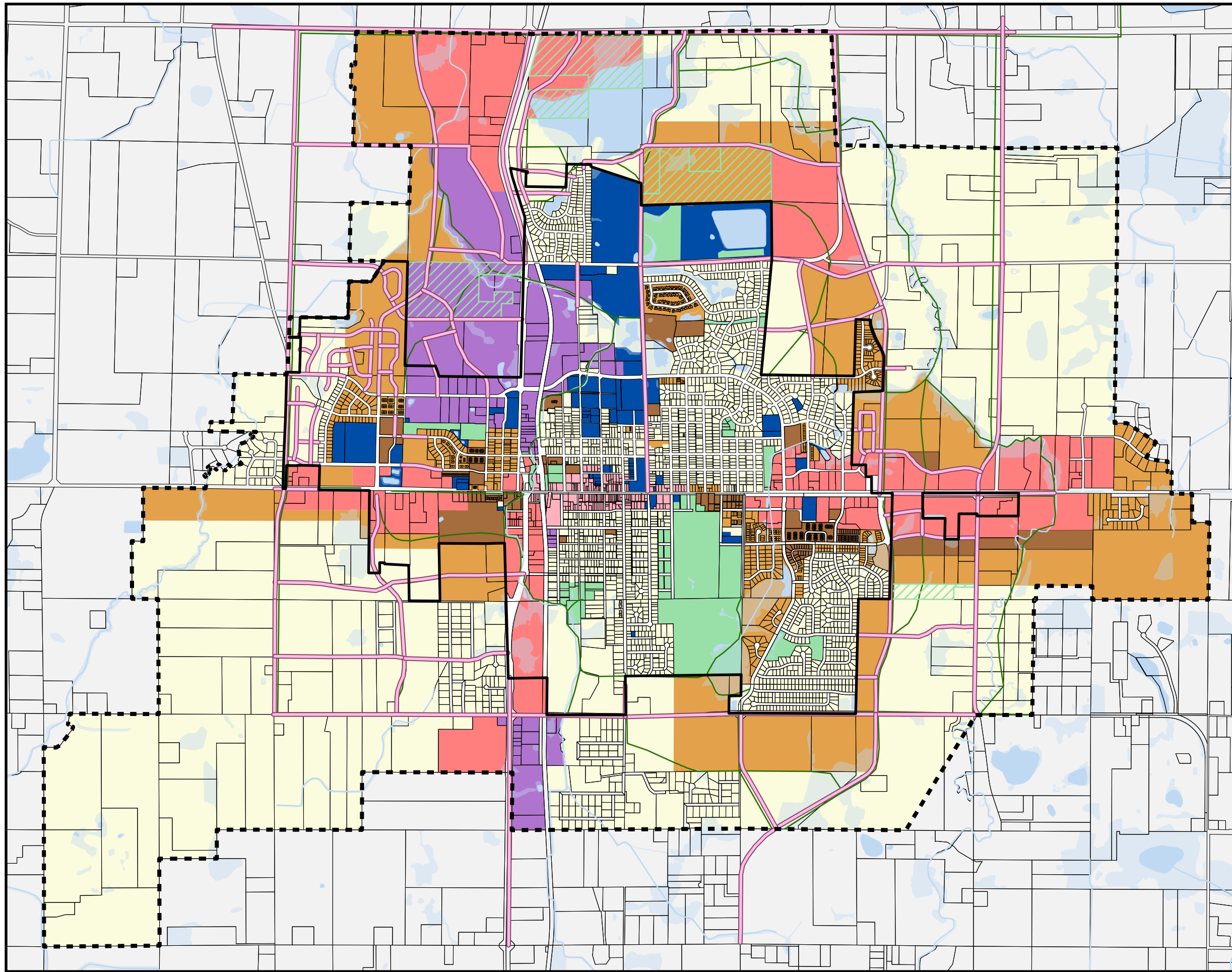




# Future Land Use

Comprehensive Plan 2045  
Scott & Le Sueur Counties

-  Single Family Residential
-  Medium Density Residential
-  High Density Residential
-  Downtown Flex
-  Business Flex
-  Industrial
-  Public
-  Park
-  Wetlands
-  Water Bodies
-  Proposed Park
-  Future Road Corridor
-  Proposed Trail



May 19, 2026.  
New Prague Planning Department.  
The City is not responsible for any inaccuracies or damages arising from the use of this map. Disclaimer provided pursuant to Minnesota Statute 466.03 21.